

JRCJames Ross Collection
WeAr the Future

James Ross Collection

SCHEMA TECNICA

JRCJames Ross Collection
WeAr the Future

Gilet Oslo Lady

**Gilet in tessuto composito**

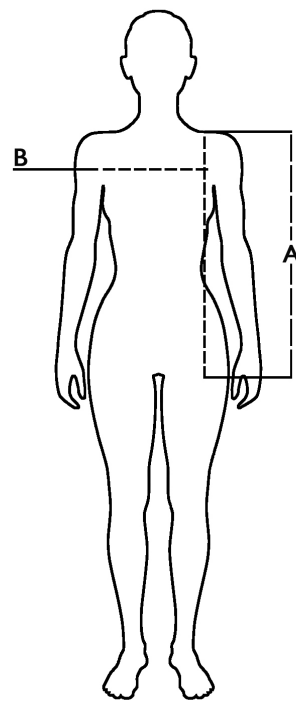
- Corpo in 100% poliestere 300 T cire, con imbottitura in soffice poliestere (effetto piuma)
- Spalle, fianchi e parte superiore del busto in softshell a 2 strati, con interno in pile antipilling
- Cerniere YKK
- Due tasche esterne con zip
- Tessuto elastico al giromanica
- Tessuto elastico al fondo




S - M - L - XL**Colori e codici articolo:**

994150 BLACK

Tabella misure

| Sizes (+/- 5%) | A front length | B chest |
|----------------|----------------|---------|
| S | 61,5 | 47 |
| M | 64 | 49 |
| L | 66,5 | 51 |
| XL | 69 | 53 |
| XXL | 71,5 | 55 |

**Descrizione tecnica**

| | Composizione / Fabric Composit |  g/m ² |
|-------------------------------------|--|--|
| Tessuto esterno/Shell | 100% Poliestere | 195 |
| Fodera/Lining | 100% Poliestere | 50 |
| Imbottitura/Padding | 100% Poliestere | 180 |
| Imballo/Packages |  20 pcs | |
| Istruzioni di Lavaggio / Care Label |  | |

Cat. DPI/PPE category I Norme **CE** e livelli di protezione/EC standards and protection levels EN ISO 13688:2013